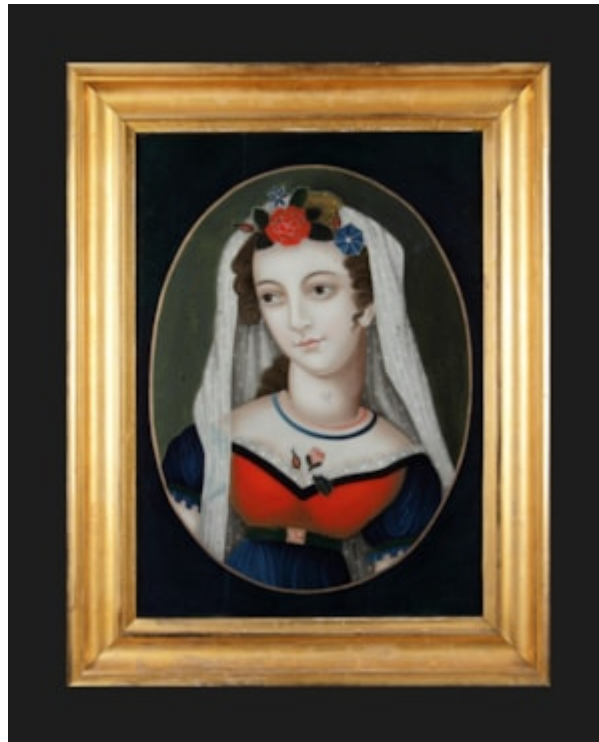


Finch & C^o



CHINESE EXPORT REVERSE GLASS PAINTING OF AN ENGLISH MAIDEN
A CHINESE EXPORT REVERSE GLASS PAINTING OF AN ENGLISH MAIDEN
THE PORTRAIT WITHIN ITS ORIGINAL GILT FRAME
IN FINE CONDITION
LATE 18TH CENTURY
SIZE: 50CM HIGH, 35CM WIDE – 61CM HIGH, 47.5CM WIDE (FRAMED)
19¾ INS HIGH, 13¾ INS WIDE – 24 INS HIGH, 18¾ INS WIDE (FRAMED)

LITERATURE

IN 18TH AND EARLY 19TH CENTURY CANTON A THRIVING EXPORT MARKET EXISTED FOR CHINA TRADE PAINTINGS. WESTERN SUBJECTS WERE COPIED FROM PRINTS SUPPLIED BY EUROPEAN TRADERS. C. TOOGOOD DOWNING WRITING IN THE EARLY 19TH CENTURY DESCRIBED THE STUDIOS OF THE CHINESE ARTISTS WORKING FOR THE EXPORT TRADE ON CHINA STREET IN CANTON.... 'IT MAY BE MENTIONED IN THIS PLACE THAT THE CHINESE ARE VERY FAMOUS FOR THEIR PAINTINGS ON GLASS. THIS IS AN ART, WHICH IS ALMOST LOST IN EUROPE, BUT IS VERY SUCCESSFULLY PRACTISED IN THIS COUNTRY. THIS STYLE OF PAINTING SUITS THE CHINESE ARTISTS VERY WELL AS IT EXHIBITS THE SPLENDOUR OF THEIR COLOURS. PAINTED GLASS MUST BE VERY EXTENSIVELY USED IN CHINA FOR ORNAMENTS THE HOUSES ETC., AS EVEN THE SUBURBS WITHOUT THE WALLS OF CANTON, GREAT NUMBERS OF SHOPS FOR THE SALE OF THIS SINGLE ARTICLE ARE COLLECTED TOGETHER, SO THAT THE FOREIGNERS HAVE GIVEN THE LOCALITY THE NAME OF PAINTER STREET. OUR JACK-TARS ARE MUCH CAUGHT BY THIS SHOWY MATERIAL AND GENERALLY CARRY AWAY SOME TRUMPERY SPECIMENS TO DAZZLE THE EYE OF THE FAIR DAME OF SHADWELL AND BLACKWALL'. C. TOOGOOD DOWNING 'THE FAN-QUI IN CHINA IN 1836-7' VOL II, PG; 90-117, 1838.