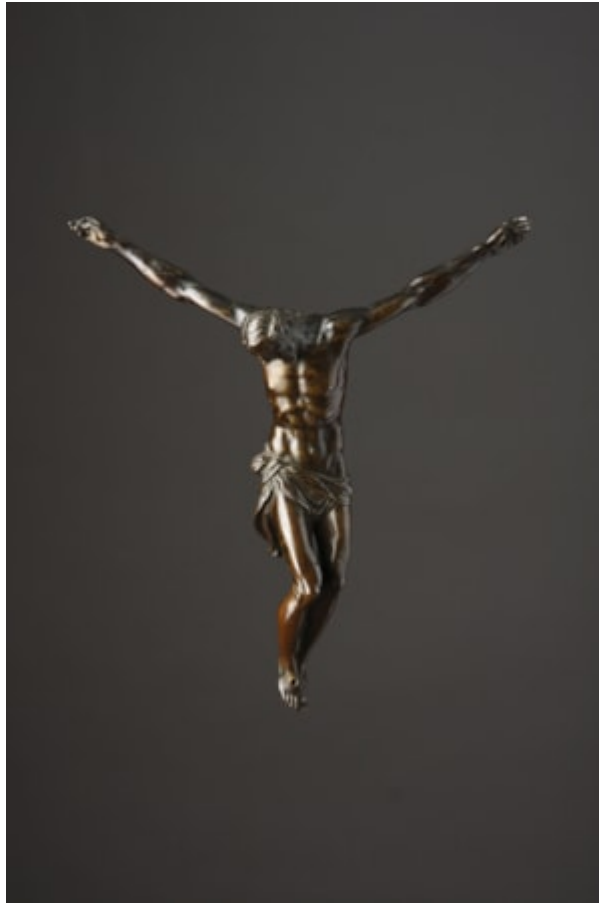


Finch & C^o



ROMAN BRONZE CORPUS CHRISTI CAST FROM A MODEL ATTRIBUTED TO GUGLIELMO DELLA

A ROMAN BRONZE CORPUS CHRISTI CAST FROM A MODEL ATTRIBUTED TO GUGLIELMO DELLA PORTA (1500 – 1577)

LOST WAX, CAST IN ONE PIECE. INTERIOR HOLLOW, NATURAL GREENISH PATINA

LATE 16TH CENTURY

SIZE: 23CM HIGH, 20.5CM WIDE – 9 INS HIGH, 8 INS WIDE

LITERATURE

IMAGES BASED ON THE PASSION OF CHRIST BECAME INCREASINGLY COMMON FROM THE 13TH CENTURY ONWARDS.

BOTH ST BERNARD AND ST FRANCIS OF ASSISI (1182 – 1226) PLACED ON A SPECIAL EMPHASIS ON THE HUMANITY OF

CHRIST AND ENCOURAGED AN AFFECTIVE SPIRITUALITY, WHICH CONCENTRATED ON THE PASSION.

THESE IMAGES WERE INTENDED TO BE LOOKED AT, AND IT WAS EQUALLY BELIEVED THAT THE IMAGES THEMSELVES HAD

‘EYES TO SEE’. A HISTORY OF THE FIRST DOMINICAN ORDER WRITTEN BY GÉRARD DE FRACHET BEFORE 1269 STATED

THAT: ‘IN THEIR CELLS THEY HAD BEFORE THEIR EYES IMAGES OF THE VIRGIN AND HER CRUCIFIED SON SO THAT WHILE

READING, PRAYING AND SLEEPING THEY COULD LOOK UPON THEM AND BE LOOKED UPON BY THEM WITH EYES OF

COMPASSION’.