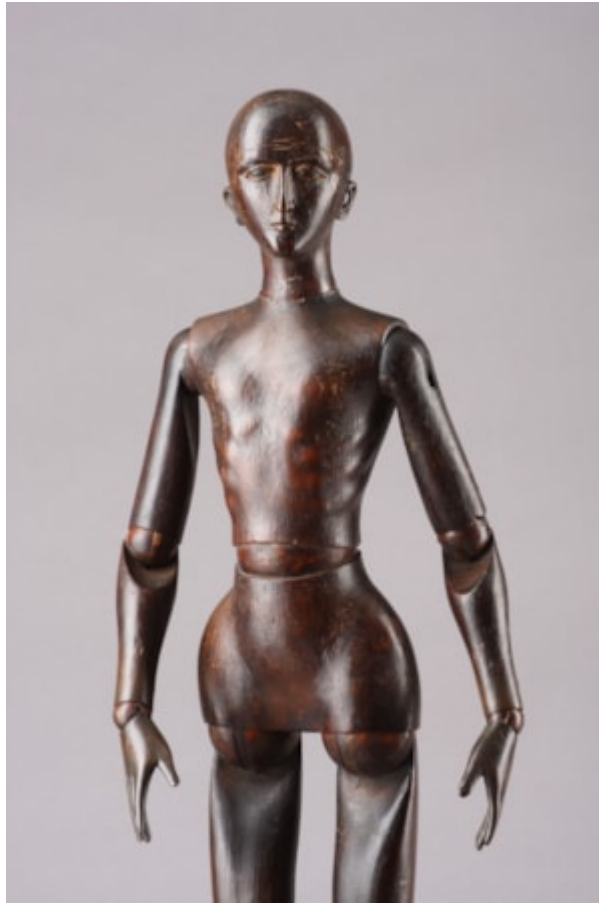


# *Finch & C<sup>o</sup>*



## **ENGLISH FINELY CARVED PINE ARTICULATED ARTISTS LAY FIGURE**

ALARGE ENGLISH FINELY CARVED PINE ARTICULATED ARTISTS LAY FIGURE

CIRCA 1820

SIZE: 66CM HIGH – 26 INS HIGH

## **LITERATURE**

ESSENTIALLY THESE THREE-DIMENSIONAL MODELS ACT AS AN ARTIST'S AIDE-MÉMOIRE FOR TWO-DIMENSIONAL WORK. THEY ARE FOUND IN ALL SIZES FROM A FEW INCHES HIGH UP TO LIFE SIZE. REPRESENTING THE IDEAL PROPORTIONS OF THE HUMAN BODY THE MAJORITY ARE CARVED FROM PINE, AND FROM THE 17TH CENTURY ARE MADE WITH PIVOTED BALL JOINTS ALLOWING FOR A NATURAL BENDING AND TURNING. THE FACES ARE ALWAYS EXPRESSIONLESS AND THE ANDROGYNOUS FEATURES OF THE HEAD ENABLE IT TO BE DRESSED CONVINCINGLY AS EITHER MAN OR WOMAN. LAY FIGURES HAVE BEEN USED BY ARTISTS FOR CENTURIES AND MOST PROBABLY ORIGINATED IN ANCIENT GREECE WHERE THEY ASSISTED SCULPTORS IN THE POSING OF BARE LIMBS. HOWEVER, VASARI MAINTAINS THE ITALIAN RENAISSANCE ARTIST FRA BARTOLOMMEO (1472 – 1517) WAS THE FIRST PERSON TO DEVISE A WOODEN LIFE SIZE, FULLY ARTICULATED LAY FIGURE.