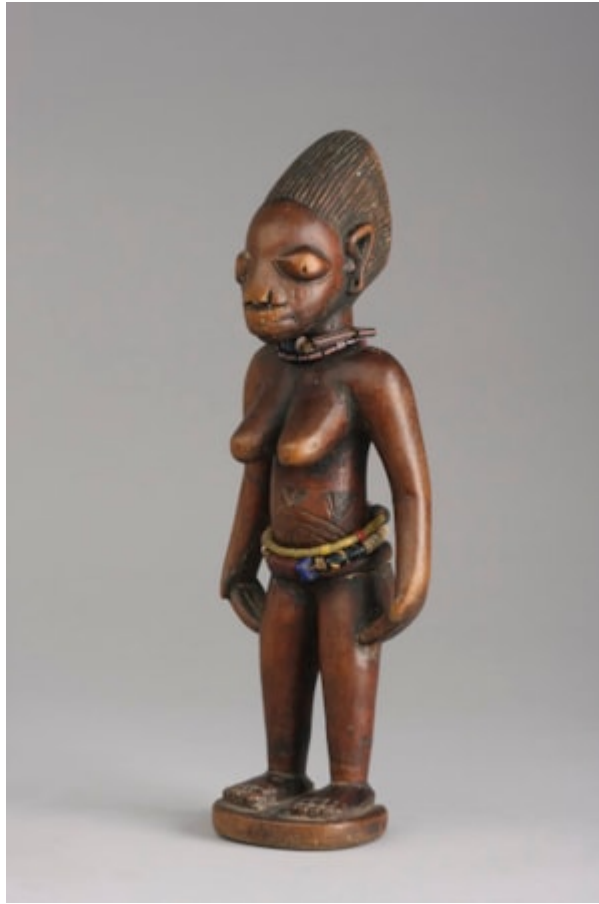


Finch & C°



IBEJI

A SUPERBLY CARVED FEMALE IBEJI WITH UNUSUALLY LONG LEGS AND BEAUTIFULLY PROPORTIONED ARMS WITH HER FINGERS TOUCHING THE TOP OF HER LEGS. STRIPED BLACK BEADS AROUND THE NECK, YELLOW AND RED BEADS AROUND THE WAIST, AS WELL AS OSTRICH SHELL BEADS. SHE ALSO HAS A CARVED WAISTBAND. RADIATING SCARS FROM THE UMBILICUS AND A SERIES OF 'V' SHAPED SCARS CARVED ON HER STOMACH. HAVING A SIMPLE HAIRDO GOING BACK TO KNOTS AT THE REAR. AN EXCEPTIONAL AND INDIVIDUALISTICALLY CARVED FIGURE.

19TH CENTURY

ABEOKUTA/ EGBA/ EGBADO ? (THE HANDS ARE TYPICAL FOR THE AREA)

LITERATURE

CF. IN IBEJI BY MAREIDI & GERT STOLL, 1980, THERE ARE A PAIR OF IBEJI FROM THE SHAKI AREA WHICH ALSO HAVE MIXED VISUAL SIGNALS, ILLUS. 137